



MICE

Tokyo & Osaka



Hankyu-Hanshin-Daiichi Hotel Group

Table of Contents

04	Four reasons for Hankyu Hanshin Hotels
05	In the heart of Tokyo
07	In the heart of Osaka
11	Dai-ichi Hotel Tokyo
15	Hotel Hankyu International
17	Hotel new Hankyu Osaka
19	Hotel Hanshin Osaka
22	Takarazuka Hotel

A woman with long dark hair, wearing a bright red dress and black boots, stands on a rooftop terrace with a glass railing. She is looking out over a vast cityscape under a clear blue sky. The city below is densely packed with buildings and greenery. The overall scene is bright and airy, with a high-angle perspective.

**A goal without
a plan
is just a wish.**

Antoine de Saint-Exupéry

Plan with us
&
let us make your event great

Four reasons for Hankyu Hanshin Hotels

1.

Space for your ideas

Concentrated on the main business cities Tokyo and Osaka, we offer a large number of banquet halls and meeting spaces (totally 9174 m² event space, 1897 guest rooms).

For small social gatherings, business meetings or larger exhibitions and conferences.

2.

MICE Know-How

In our division specializing on MICE we offer you assistance in your planning process.

Our group holding is also specialized in the sectors:

- entertainment (Takarazuka Revue)
- sports (Hanshin Tigers baseball team)
- travel (Hankyu Travel International)
- shopping (Hankyu Hanshin Department Stores)
- railway (Hankyu Railway & Hanshin Electric Railway)

3.

Sustainability

In our SDGs department we are taking action every day to reach our goals for sustainability and a better environment for the future.

4.

Tradition & Hospitality

Based on more than 90 years of history and 43 hotels, the Hankyu Hanshin Daiichi Hotel Group is one of the leading hotel chain operators in Japan.

..in the heart of Tokyo

With a total of 43 hotels the Hankyu Hanshin Daiichi Hotel Group is one of the leading hotel operators in Japan. (18 hotels directly operated, 25 hotels under franchise management)

Our hotels are located all over Japan between Kagoshima in the south and Yamagata in the north, mainly concentrated on the hotspots Tokyo and Osaka.

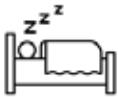
In Tokyo you can find our elegant MICE flagship Dai-ichi Hotel Tokyo since 1938 and five hotels of our directly operated lifestyle hotel sub-brand "remm" right in the center of Tokyo with the shortest access to the nearest train stations. While Dai-ichi Hotel Tokyo is famous for its MICE facilities, high-grade service and VIP floor, the "remm" brand focuses on your best sleep & relax experience.



our MICE hotels in Tokyo

TOKYO SHIMBASHI

Dai-ichi Hotel Tokyo



278 guest rooms
VIP floor



8 meeting rooms
1640 m² meeting room space
581 m² largest meeting room

...and many more hotels for your best access stay in Tokyo



remm plus
Ginza

238 guest rooms



remm
Tokyo Kyobashi

272 guest rooms



remm
Hibiya

255 guest rooms



remm
Akihabara

260 guest rooms



remm
Roppongi

400 guest rooms



... in the heart of Osaka

Growing originally from the Hankyu and Hanshin railway networks linking the Kansai economic centers Osaka, Kobe and Kyoto, the group companies developed department stores, hotels, and entertainment facilities (including the Takarazuka Grand Theater and Hanshin Koshien baseball stadium) along the rail lines from the early 20th century onward.

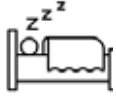
Now also a builder and operator of shopping and office complexes to serve the diverse needs of contemporary Kansai, Hankyu Hanshin Holdings Group remains an important driver of community development along its rail lines.

The Holdings Group covers real estate, urban transportation, travel, hotels, information technology and international transportation.

our **MICE** hotels

OSAKA UMEDA

Hotel Hankyu International



168 guest rooms
VIP floor



13 meeting rooms
2568 m² meeting room space
1100 m² largest meeting room



OSAKA FUKUSHIMA

Hotel Hanshin Osaka



290 guest rooms

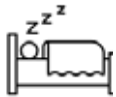


8 meeting rooms
1090 m² meeting room space
440 m² largest meeting room



OSAKA UMEDA

Hotel new Hankyu Osaka



961 guest rooms



12 meeting rooms
1950 m² meeting room space
858 m² largest meeting room



HYOGO TAKARAZUKA

Takarazuka Hotel



200 guest rooms



9 meeting rooms
1926 m² meeting room space
903 m² largest meeting room



...and many more hotels for your best access stay in Osaka



OSAKA SHIN-OSAKA
remm
Shin-Osaka
296 guest rooms



OSAKA TOYONAKA
Senri Hankyu
Hotel Osaka
203 guest rooms



OSAKA UMEDA
Hotel Hankyu
RESPIRE OSAKA
1030 guest rooms



OSAKA UMEDA
Hotel new Hankyu
Osaka Annex
302 guest rooms

TOKYO

...city of contrasts



Dai-ichi Hotel Tokyo

1-2-6 Shimbashi, Minato-ku, Tokyo, 105-8621, Japan



278 guest rooms
VIP floor



8 meeting rooms



10 restaurants & bar

Elegance & Excellence

The Hankyu-Hanshin-Daiichi Hotel Group's flagship hotel is situated in Shimbashi which boasts the great access as the main area of Tokyo. It prides itself on its luxuriousness and dignity, cultivated with the long history since 1938. Guests can enjoy its high-grade service with a VIP floor.

- **NARITA INTERNATIONAL AIRPORT** 120 min by airport limousine bus
- **HANEDA INTERNATIONAL AIRPORT** 60 min by airport limousine bus
- **SHIMBASHI STATION** 2 min walk
- **TOKYO INTERNATIONAL FORUM** 10 min walk
- **GOVERNMENT MINISTRIES**
- **GINZA**



MICE packages

ONE DAY MEETING ¥23,500 pp

- Conference room charge (eight hours)
- Projectors, screens and audio & lighting equipment
- Venue setup fee
- Free-flow of water and green tea
- Three coffee breaks including coffee or tea and refreshments like sandwiches and pastries

HALF DAY MEETING ¥14,000 pp

- Conference room charge (four hours)
- Projectors, screens and audio & lighting equipment
- Venue setup fee
- Free-flow of water and green tea
- Three coffee breaks including coffee or tea and refreshments like sandwiches and pastries

RECEPTION ¥20,000 pp

- Venue rental
- Venue setup fee
- Reception meal (seated 6-course meal)
- Soft drinks, alcoholic drinks, coffee



Banquet halls

	Size	Height	Floor	Theater	School	Round
LA ROSE	581 m ²	7.2 m	5	650	400	360
PRIMAVERA	479 m ²	3.4 m	4	540	320	230
LUMIERE	180 m ²	3.4 m	21	100	72	64
FLORA	120 m ²	2.9 m	4	100	50	40
MARGUERITE	100 m ²	3.4 m	4	-	-	25
COSMOS	60 m ²	2.9 m	4	50	24	20
CYCLAMEN	60 m ²	2.9 m	4	50	24	20
CATTLEYA	60 m ²	2.9 m	4	50	24	20

five really cool things to do around your hotel in Shimbashi...

1.



Party like a local

Experience the lively nightlife of Shimbashi, and join the local businessman after work for a drink or two with a train ratteling over you in one of the famous bars under the bridge of Shimbashi.

4.



City Oasis

Take a green break from the fast pace of the city. Hibiya Park was designed as the first westernized park and opened in 1903 as a pioneer modern city park. Enjoy seasonal flowers and plants all year round like cherry blossoms or red autumn leaves.

2.

Tamiya Plamodel Factory

In the middle of Shimbashi and just some minutes walk from your hotel, you can find a fine and small shop with a great variety of all the Tamiya products your heart desires. Also great as souvenirs for modeller fans.

3.



Shop till you drop

Ginza is just a 10 min walk away and famous for one of world's most expensive store rents. You can enjoy luxury brand boutique stores but also a 12 stores high store of the beloved Japanese budget brand Uniqlo. Ginza is as well home to 200 art galleries, theaters and cinemas.

5.



What a view !

Enjoy the ride and the spectacular view from the fully automatized Yurikamome line between Shimbashi and Toyosu. It will take you in between skyscrapers, the Rainbow Bridge and the famous giant Unicorn Gundam statue at Odaiba.



OSAKA

...city to rumble

Hotel Hankyu International

19-19 Chayamachi, Kita-ku, Osaka, 530-0013, Japan



168 guest rooms
VIP floor



13 meeting rooms



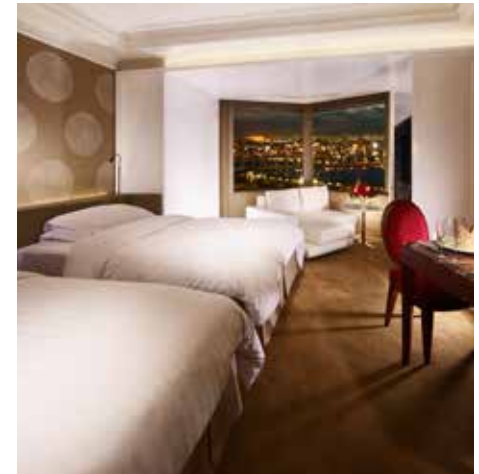
10 restaurants & bar

Superior Quality

The luxurious hotel is conveniently located in the bustling retail and commercial district of Umeda in Osaka City.

The hotel's design concept is based on the luxurious mansions of old Europe and this is reflected in the sumptuous hotel decor. It gives each guest room the same qualities of a suite.

- **KANSAI INTERNATIONAL AIRPORT** 70 min by airport limousine bus
- **OSAKA INTERNATIONAL AIRPORT** 30 min
- **OSAKA UMEDA STATION** 3 min walk
- **OSAKA INTERNATIONAL CONVENTION CENTER** 10 min by taxi
- **INTEX OSAKA** 25 min



MICE packages

ONE DAY MEETING ¥23,500 pp

- Conference room charge (eight hours)
- Projectors, screens and audio & lighting equipment
- Venue setup fee
- Free-flow of water and green tea
- Three coffee breaks including coffee or tea and refreshments like sandwiches and pastries

HALF DAY MEETING ¥14,000 pp

- Conference room charge (four hours)
- Projectors, screens and audio & lighting equipment
- Venue setup fee
- Free-flow of water and green tea
- Three coffee breaks including coffee or tea and refreshments like sandwiches and pastries

RECEPTION ¥20,000 pp

- Venue rental
- Venue setup fee
- Reception meal (seated 6-course meal)
- Soft drinks, alcoholic drinks, coffee

Banquet halls

	Size	Height	Floor	Theater	School	Round
SHION	1100 m ²	7.0 m	4	1000	600	550
ZUICHO	573 m ²	4.2 - 5.1 m	6	720	410	330
KAFU	187 m ²	3.0 - 3.3 m	4	180	102	80
GEKKA	168 m ²	3.0 - 3.3 m	4	180	102	80
HIBISCUS MARGUERITE	each 67 m ²	3.0 m	6	60	35	30
CATTLEYA	60 m ²	2.6 m	4	50	40	30
YAMABUKI/SUZURAN COSMOS/NANTEN	each 60 m ²	3.0 m	5	60	35	30
CLOVER CAMELIA	each 53 m ²	2.6 m	4	50	30	24



Hotel new Hankyu Osaka

1-1-35 Shibata, Kita-ku, Osaka, 530-8310, Japan



961 guest rooms



12 meeting rooms



18 restaurants & bar

Urban Community Hotel

Quality hospitality united with the best convenience and comfort at the direct location right next to JR Osaka Station and Hankyu/Subway Umeda Station. The "Urban Community Hotel" offers ideal guest rooms for both business and leisure, a wide variety of restaurants, bars and ornate banquet halls.

- **KANSAI INTERNATIONAL AIRPORT** 60 min by airport limousine bus
- **OSAKA INTERNATIONAL AIRPORT** 30 min
- **OSAKA UMEDA STATION** 3 min walk
- **OSAKA INTERNATIONAL CONVENTION CENTER** 10 min by taxi
- **INTEX OSAKA** 25 min



MICE packages

ONE DAY MEETING ¥16,000 pp

- Conference room charge (eight hours)
- Projectors, screens and audio & lighting equipment
- Venue setup fee
- Free-flow of water and green tea
- Three coffee breaks including coffee or tea and refreshments like sandwiches and pastries

HALF DAY MEETING ¥9,500 pp

- Conference room charge (four hours)
- Projectors, screens and audio & lighting equipment
- Venue setup fee
- Free-flow of water and green tea
- Three coffee breaks including coffee or tea and refreshments like sandwiches and pastries

RECEPTION ¥17,000 pp

- Venue rental
- Venue setup fee
- Reception meal (seated 6-course meal)
- Soft drinks, alcoholic drinks, coffee

Banquet halls

	Size	Height	Floor	Theater	School	Round
MURASAKI	858 m ²	3.3 - 4.8 m	2	800	400	400
HANA	380 m ²	3.4 m	2	400	250	180
HOSHI TSUKI	271 m ²	2.9 m	2	300	200	160
YUKI	119 m ²	2.7 m	2	100	50	50
SORA	119 m ²	2.7 m	2	100	50	50
SUMIRE I	59 m ²	2.8 m	2	40	20	20
SUMIRE II	47 m ²	2.5 m	2	40	20	20
KEYAKI	each 18 m ²	2.3 m	3	-	-	8
KAEDE		2.5 m	2	-	-	8
KIRI	18 m ²	2.5 m	2	-	-	8
TACHIBANA	17 m ²	2.5 m	2	-	-	8



Hotel Hanshin Osaka

5-6-16 Fukushima, Fukushima-ku, Osaka, 553-0003, Japan



290 guest rooms



8 meeting rooms

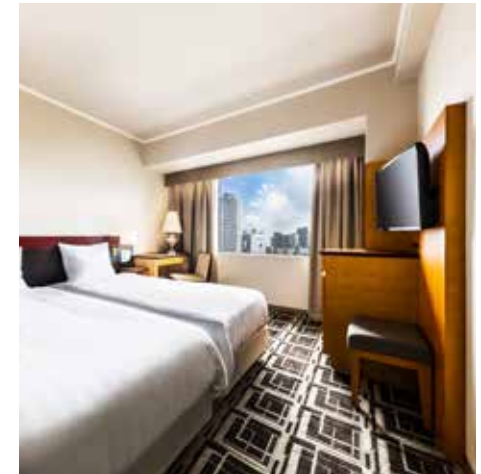


6 restaurants & bar

Natural hot spring and spa

Enjoy the relaxing natural hot spring even in the middle of busy Osaka! The hotel features spa facilities and hot spring water in each room helping you to relax after a hard day of work. Hotel Hanshin Osaka is located in front of Hanshin and JR Fukushima Station with good access next to Umeda Station and in walking distance to Osaka International Convention Center.

● KANSAI INTERNATIONAL AIRPORT	70 min	by airport limousine bus
● OSAKA INTERNATIONAL AIRPORT	30 min	
● FUKUSHIMA STATION	1 min	walk
● OSAKA INTERNATIONAL CONVENTION CENTER	15 min	walk
	25 min	by taxi
● INTEX OSAKA		



MICE packages

ONE DAY MEETING ¥15,000 pp

- Conference room charge (eight hours)
- Projectors, screens and audio & lighting equipment
- Venue setup fee
- Free-flow of water and green tea
- Three coffee breaks including coffee or tea and refreshments like sandwiches and pastries

HALF DAY MEETING ¥9,000 pp

- Conference room charge (four hours)
- Projectors, screens and audio & lighting equipment
- Venue setup fee
- Free-flow of water and green tea
- Three coffee breaks including coffee or tea and refreshments like sandwiches and pastries

RECEPTION ¥15,000 pp

- Venue rental
- Venue setup fee
- Reception meal (seated 6-course meal)
- Soft drinks, alcoholic drinks, coffee

Banquet halls

	Size	Height	Floor	Theater	School	Round
THE BALL ROOM	440 m ²	6,0 m	10	580	300	288
CRYSTAL ROOM	250 m ²	6,0 m	10	260	200	144
EMERALD ROOM	150 m ²	2,8 m	12	164	81	60
SALON PEARL	60 m ²	2,6 m	12	48	24	24
SALON A	40 m ²	2,7 m	12	40	24	24
SALON B	each 50 m ²	2,7 m	12	40	24	24
SALON C						
SALON D						



five really cool things to do around your hotels in Osaka...

1.



Climb high

The 40 stories high (173m) Umeda Sky Building is the center of Shin-Umeda district and one of the most famous landmarks of Osaka. The famous donut-shaped aerial garden observation platform connects the twin towers East and West.

2.

Kyoto culture & history

If you have a little extra time: just by a 45 minutes train ride from your hotel's close station Osaka Umeda you can get yourself to Kyoto, which is of course the city to visit to experience traditional Japan.

3.



Place for Foodies

At Hanshin Department Umeda Main Store the B1 floor is definitely the place you don't want to miss as a food lover, as you can find all kinds of yummy food and local souvenirs. In Umeda also many other of our original stores like Hankyu Department Store are located as well. So come hungry!

4.



Take a historical ride

The Hankyu Railway connects the three cities Kyoto, Kobe and Osaka. The traditional maroon color has remained unchanged since its opening in 1910 for more than 100 years.

5.



Kobe - city in between

Just a 35 minutes train ride away from your closest station Osaka Umeda, you can again experience a different side of Japan in the harbour city Kobe. It is beautifully located between sea and mountains and has once been one of the rare doors to Japan's overseas trade. And of course not to mention: the famous Kobe beef is a must!

Takarazuka Hotel

1-1-33 Sakaemachi, Takarazuka City, Hyogo, 665-0845 Japan



200 guest rooms



9 meeting rooms



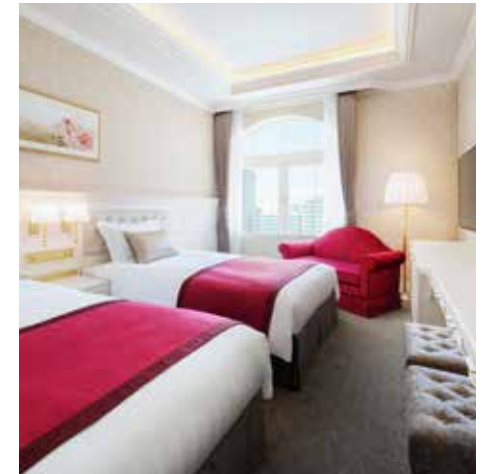
4 restaurants & bar

Unique Hotel Experience

The Takarazuka Grand Theater's only official hotel is four minutes' walk from Hankyu Railway Takarazuka Station. The hotel also features a Takarazuka Revue-themed exhibit, and you can enjoy the Takarazuka Revue atmosphere.

For your MICE events the outdoor rooftop terrace can be connected to the banquet halls.

- **KANSAI INTERNATIONAL AIRPORT** 110 min by train
- **OSAKA INTERNATIONAL AIRPORT** 30 min
- **TAKARAZUKA STATION** 4 min walk
- **OSAKA INTERNATIONAL CONVENTION CENTER** 60 min by train
- **INTEX OSAKA** 70 min



MICE packages

ONE DAY MEETING ¥18,000 pp

- Conference room charge (eight hours)
- Projectors, screens and audio & lighting equipment
- Venue setup fee
- Free-flow of water and green tea
- Three coffee breaks including coffee or tea and refreshments like sandwiches and pastries

HALF DAY MEETING ¥11,000 pp

- Conference room charge (four hours)
- Projectors, screens and audio & lighting equipment
- Venue setup fee
- Free-flow of water and green tea
- Three coffee breaks including coffee or tea and refreshments like sandwiches and pastries

RECEPTION ¥19,000 pp

- Venue rental
- Venue setup fee
- Reception meal (seated 6-course meal)
- Soft drinks, alcoholic drinks, coffee

Banquet halls

	Size	Height	Floor	Theater	School	Round
HOUJU	903 m ²	5.9 - 6.5 m	1	1200	600	500
KOHAKU	542 m ²	5.8 - 6.2 m	2	700	350	280
UTATSUKI	172 m ²	3.0 - 3.2 m	1	140	100	70
MAIHANA	114 m	3.0 - 3.2 m	1	110	60	50
SUMIRE / TACHIBANA KUSUNOKI / RAN	each 34-37 m ²	2.7 - 3.0 m	1-2	25	15	-
ECRRASSE	52 m ²	2.2 - 2.4 m	3	30	25	20





**Get in touch
&
let us help you
with your journey**

mice@hankyu-hanshin-hotels.com

<https://www.hankyu-hotel.com/en/group/mice>

**your
Hankyu Hanshin Hotels
MICE team**

* Package rates mentioned are per person, including SVC,
exclude 10% consumption tax effective until December 31, 2024

Photo credits: © Tokyo Convention Visitors Bureau,
© Osaka Convention & Tourism Bureau, © Kobe Tourism Bureau